

## Overview

Good planning leads to better outcomes. A VMware Certified Professional will plan and design a customized VMware Infrastructure implementation to meet your specific needs for server consolidation and server containment. At the end of the engagement, you will have a complete roadmap guide you through the successful implementation of VMware Infrastructure in your organization.

## Benefits

- Optimize your VMware Infrastructure environment
- Avoid implementation pitfalls that can stall or slow down your deployment
- Accelerate the achievement of the benefits of virtualizing your environment

## Target Audience

- IT organizations who are scaling their virtual infrastructure beyond a proof-of-concept or expanding to other datacenters and want to leverage proven best practices

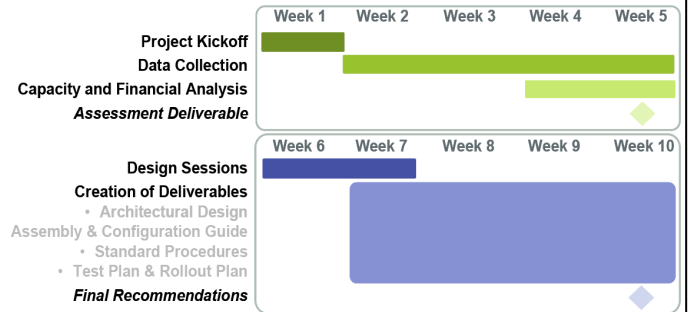
## Deliverables

- Design enablement knowledge transfer workshop
- Implementation of a prototype reference VMware Infrastructure 3 environment of up to two VMware ESX Server hosts, one VMware VirtualCenter Server and VMware Converter
- Virtualization capacity and financial analysis
- VMware Infrastructure (VI) Design Documents
  - VI Architectural Design
  - VI Assembly and Configuration Guide
  - VI Standard Procedures
  - VI Test Plan
  - VI Rollout Plan

## Requirements

- VMware Infrastructure 3 Licenses and supported hardware environment
- Network access to gather performance and utilization data for existing physical servers

## Sample Project Plan



## Roles and Responsibilities

- **VMware Certified Professional Consultant** assesses current environment, conducts knowledge transfer session and documents architectural design
- **VMware Engagement Manager** plans and coordinates all Plan and Design activities
- **Customer Systems Architects** are responsible for servers, storage and networking
- **Customer Systems Administrator** is responsible for operating system and applications

## Scope and Pricing

- Resources of one VMware Certified Professional and one Engagement Manager
- 8-10 week duration, including 30-day data collection and baseline period
- Contact your local VMware representative for pricing information
- VMware Plan and Design Service delivered by a VMware Certified Professional Consultant from Sublime Virtualization Group
- Contact the Sublime Solution at 877-273-1200 for pricing information

## Further Information

For more information, please call Sublime Solution at 877-273-1200, or visit us on the web at [www.sublimesolution.net](http://www.sublimesolution.net)